



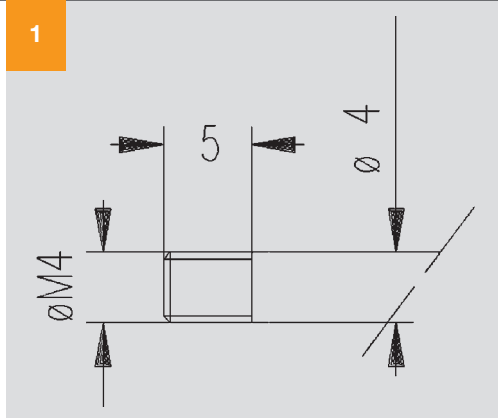
Extend your ideas
Controla el movimiento

Fijaciones

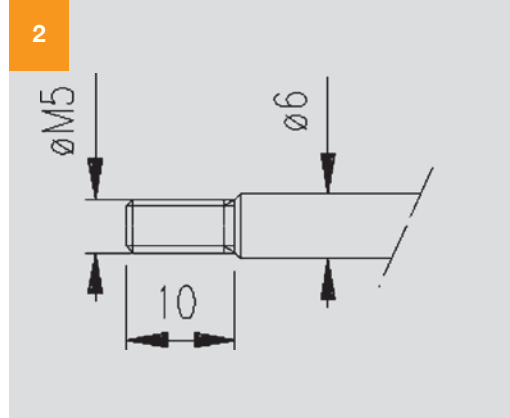
Fijaciones — End fittings



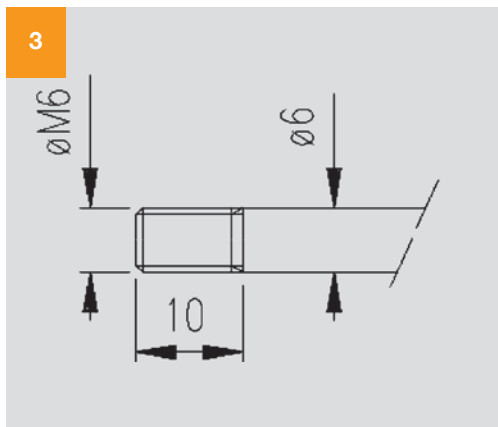
1.

FIM 4Vástago Ø 4
— Rod Ø 4

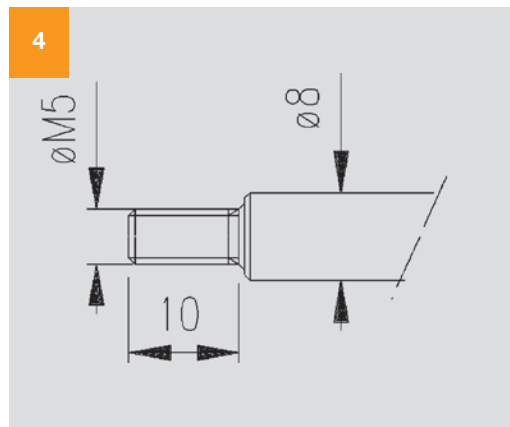
2



3.

FIM 6Vástago Ø 6
— Rod Ø 6

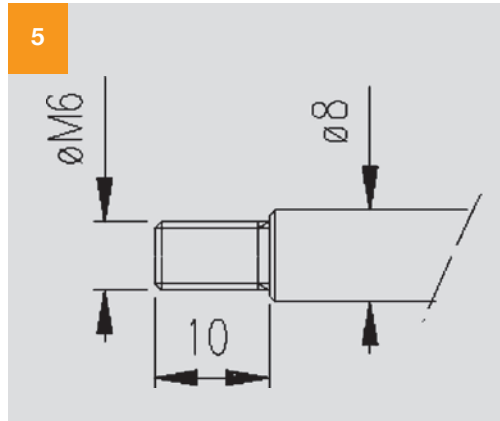
4



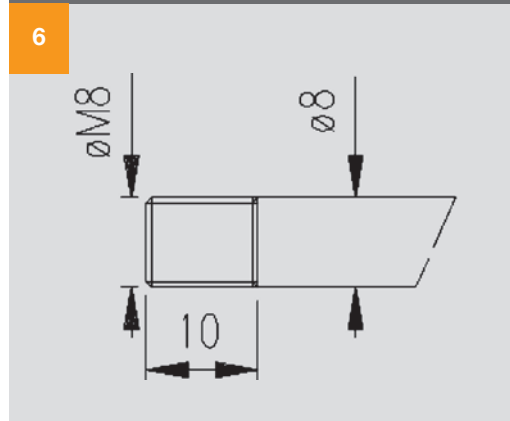
4.

FIM 5Vástago Ø 8
— Rod Ø 8

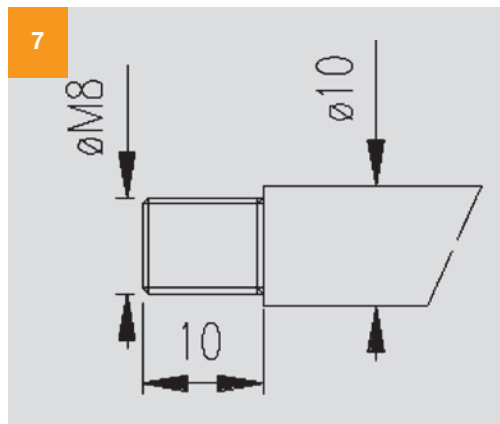
5.
FI M 6
 Vástago Ø 8
 – Rod Ø 8



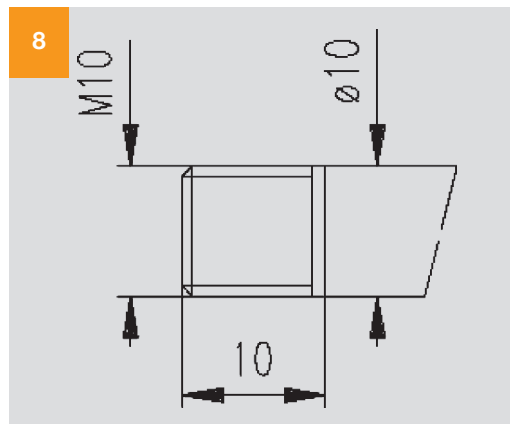
6.
FI M 8
 Vástago Ø 8
 – Rod Ø 8



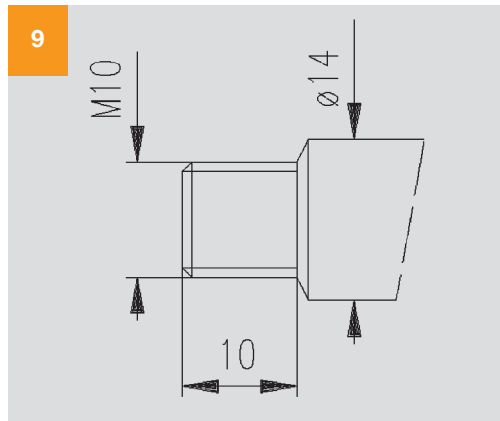
7.
FI M 8
 Vástago Ø 10
 – Rod Ø 10



8.
FI M 10
 Vástago Ø 10
 – Rod Ø 10



9.
FI M 10
 Vástago Ø 14
 – Rod Ø 14

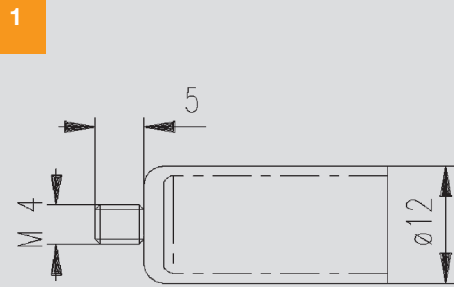


FI

Fijaciones
 – End fittings

BFFijaciones
—End fittings

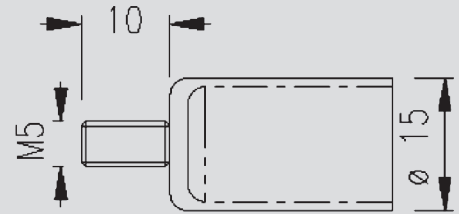
1.

BF M 4Cuerpo Ø 12
—Body Ø 12

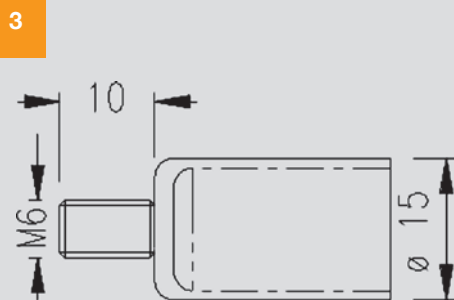
2.

BF M 5Cuerpo Ø 15
—Body Ø 15

2



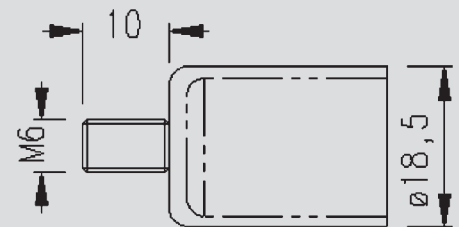
3.

BF M 6Cuerpo Ø 15
—Body Ø 15

4.

BF M 6Cuerpo Ø 18,5
—Body Ø 18,5

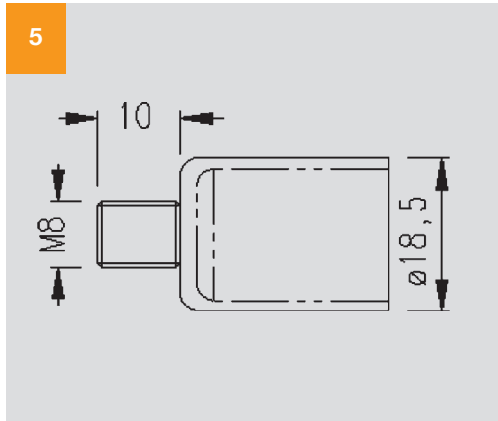
4



5.

BF M 8

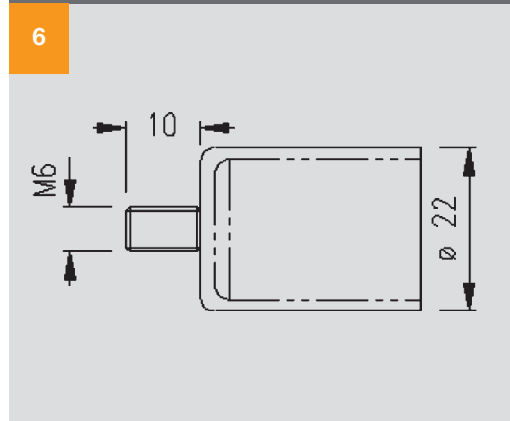
Cuerpo \varnothing 18,5
 –Body \varnothing 18,5



6.

BF M 6

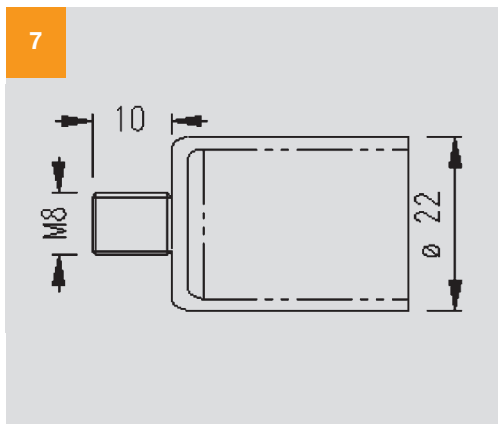
Cuerpo \varnothing 22
 –Body \varnothing 22



7.

BF M 8

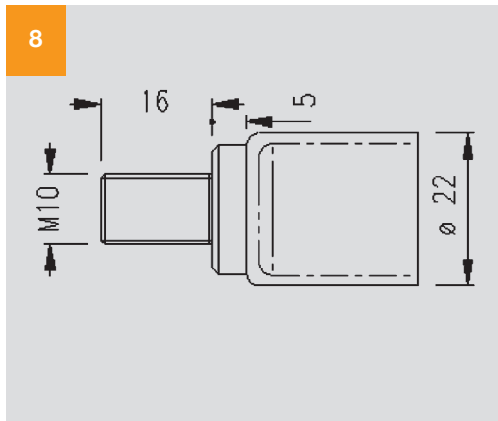
Cuerpo \varnothing 22
 –Body \varnothing 22



8.

BF3 M 10

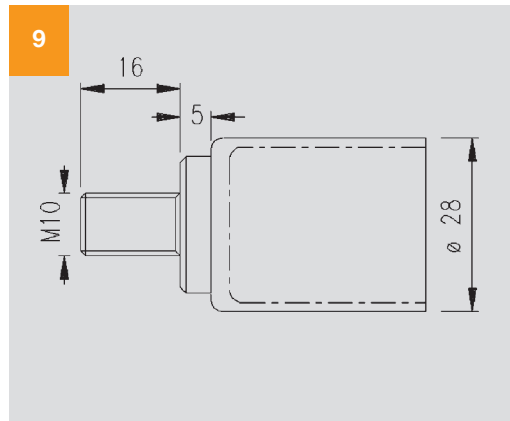
Cuerpo \varnothing 22
 –Body \varnothing 22



9.

BF3 M 10

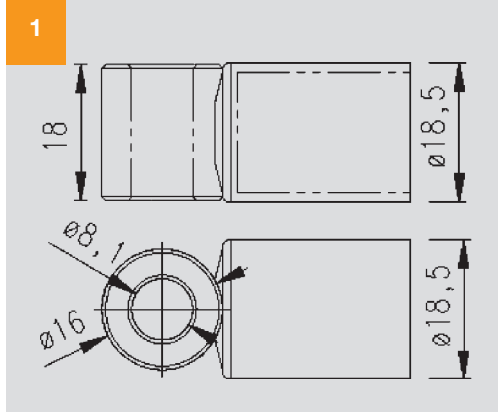
Cuerpo \varnothing 28
 –Body \varnothing 28

**BF**

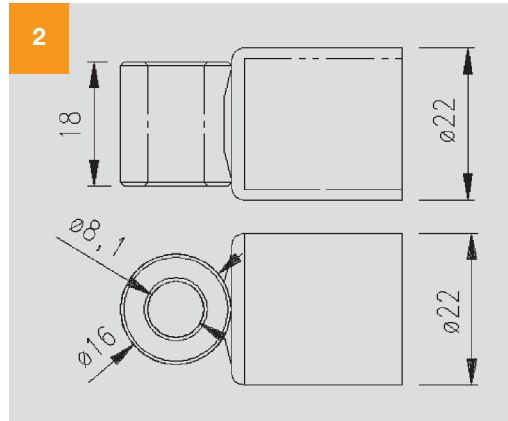
Fijaciones
 –End fittings

BA**Fijaciones**
—End fittings

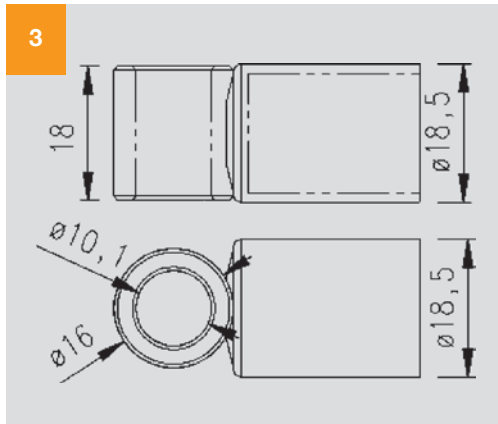
1.

BA 1Cuerpo \varnothing 18,5
—Body \varnothing 18,5

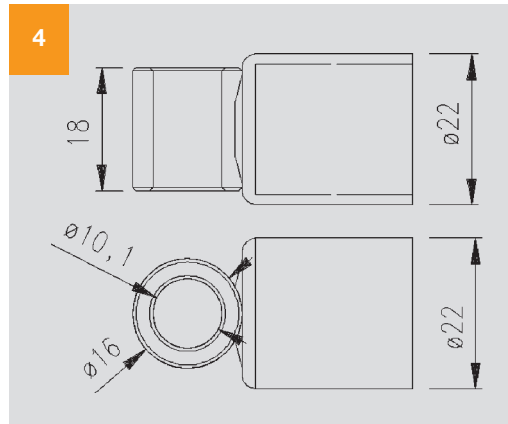
2



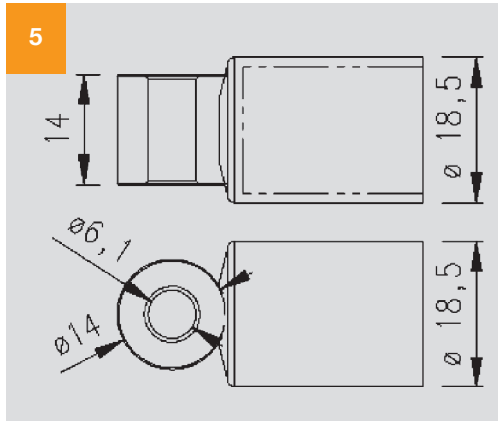
3.

BA 2Cuerpo \varnothing 18,5
—Body \varnothing 18,5

4



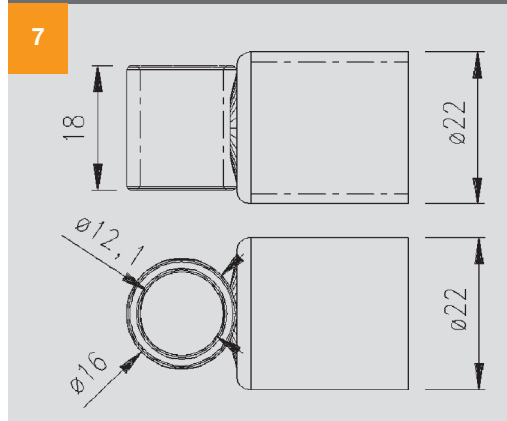
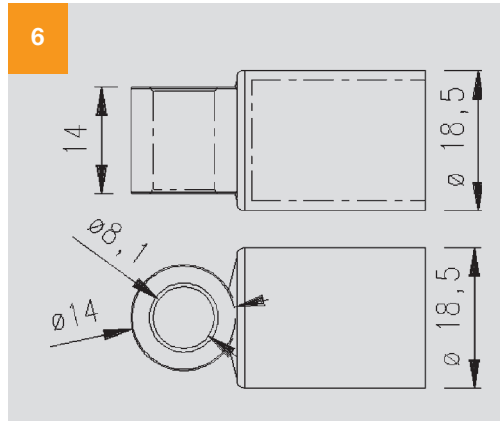
5.

BA 3Cuerpo \varnothing 18,5
—Body \varnothing 18,5

6.

BA 4Cuerpo \varnothing 18,5
—Body \varnothing 18,5

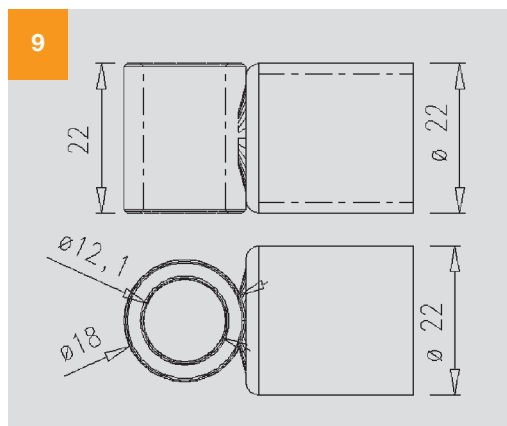
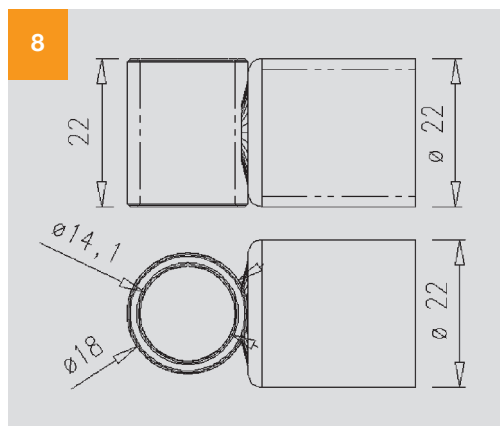
7.

BA 5Cuerpo \varnothing 22
—Body \varnothing 22

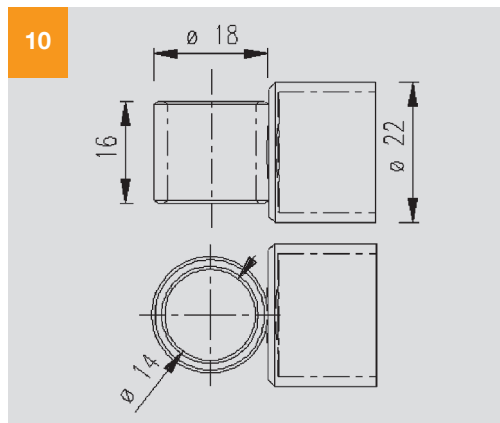
8.

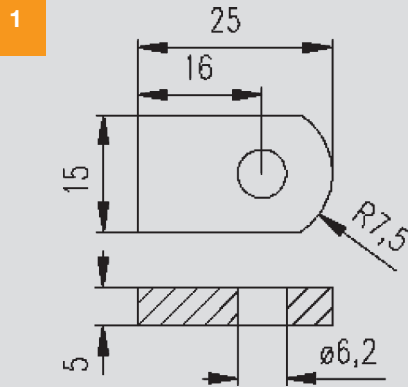
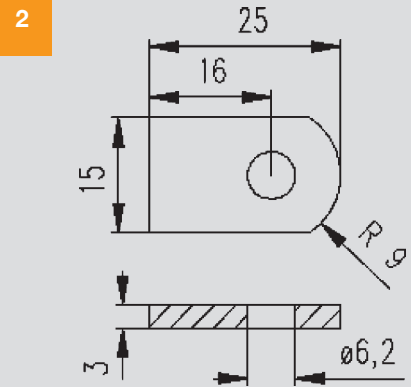
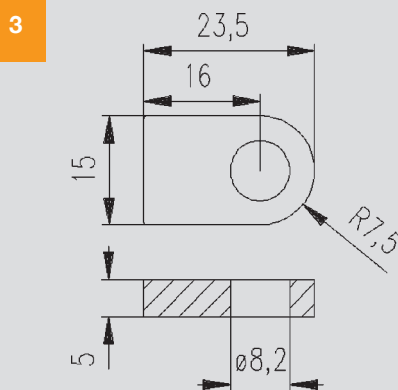
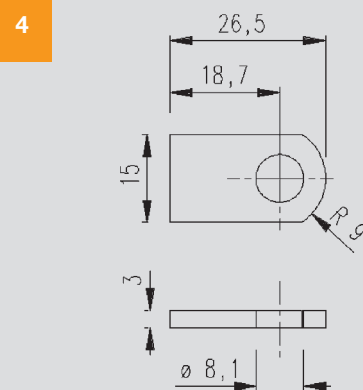
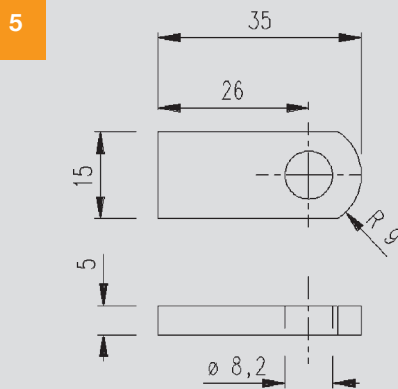
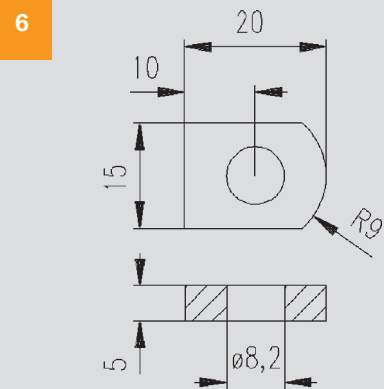
BA 6Cuerpo \varnothing 22
—Body \varnothing 22

9.

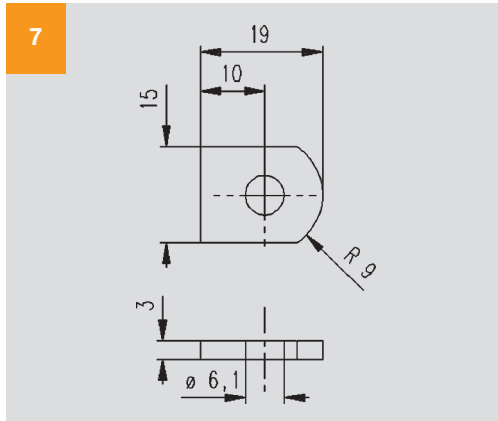
BA 7Cuerpo \varnothing 22
—Body \varnothing 22

10.

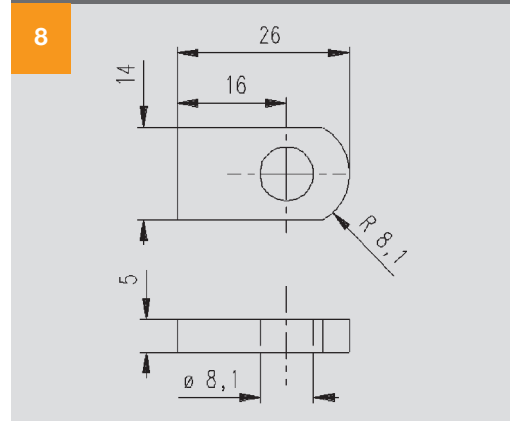
BA 8Cuerpo \varnothing 22
—Body \varnothing 22**BA**Fijaciones
—End fittings

1.
RS 12.
RS 1A3.
RS 24.
RS 2A5.
RS 2B6.
RS 2C

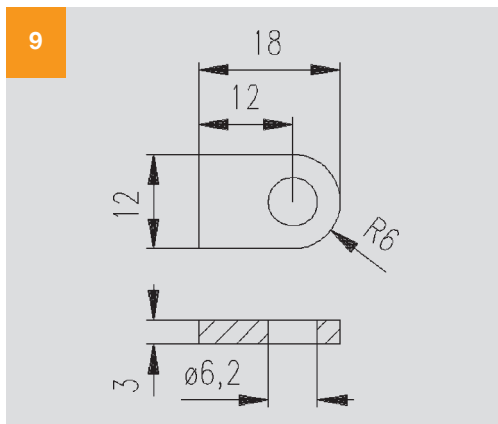
7.
RS 2D



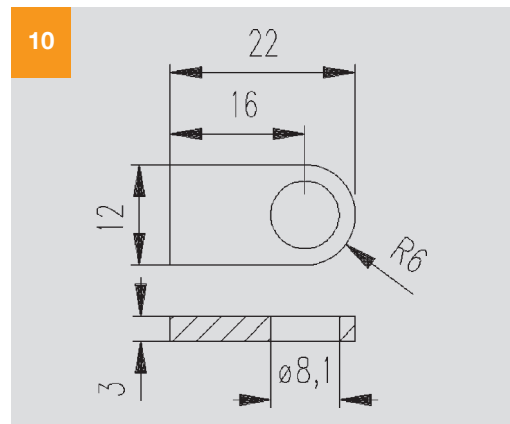
8.
RS 2E



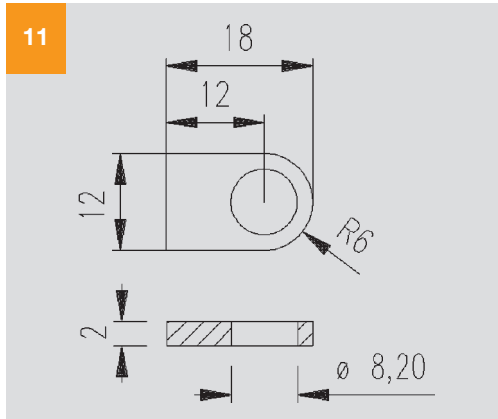
9.
RS 3



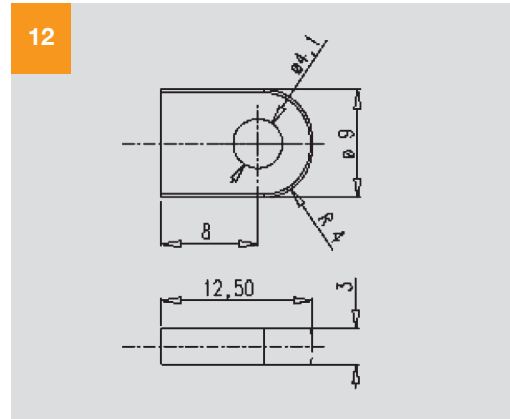
10.
RS 3A



11.
RS 3B



12.
RS 4

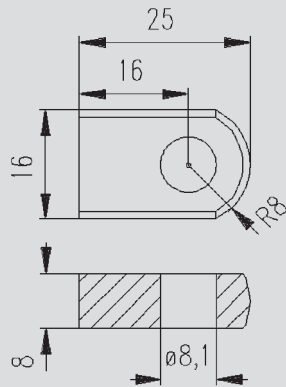


RS

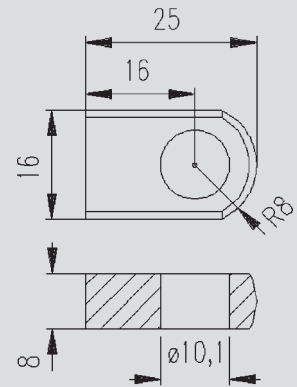
Fijaciones
– End fittings

1.
RF 1

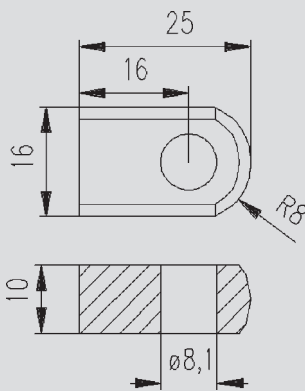
1

2.
RF 1A

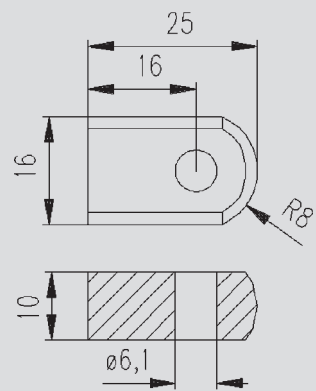
2

3.
RF 2

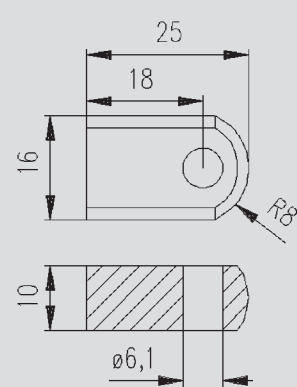
3

4.
RF 3

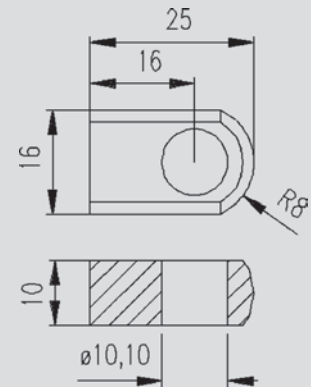
4

5.
RF 3A

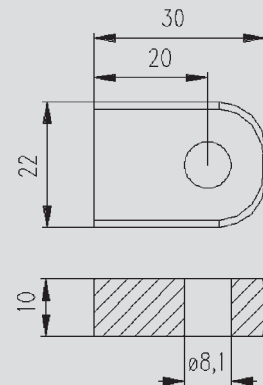
5

6.
RF 3B

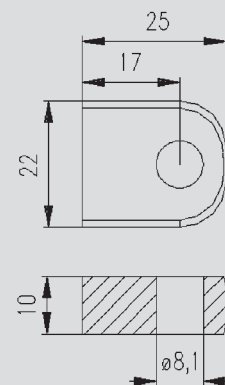
6

7.
RF 4

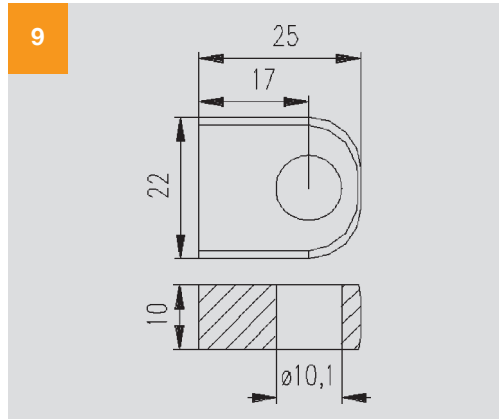
7

8.
RF 5

8

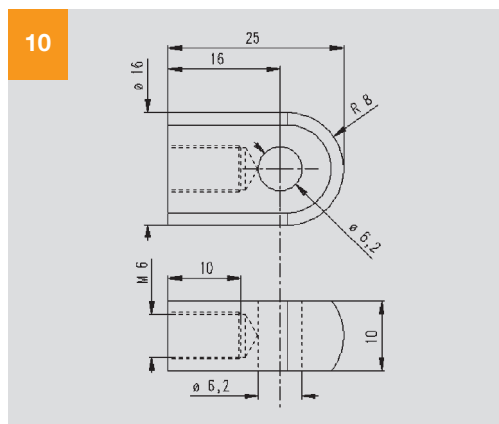


9.
RF 5A

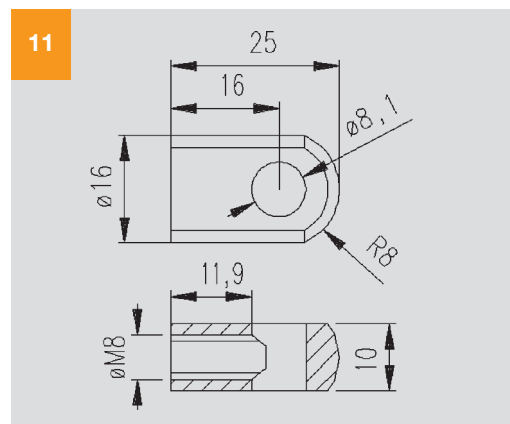


Fijación RF con
rosca
— RF end fittings
with thread

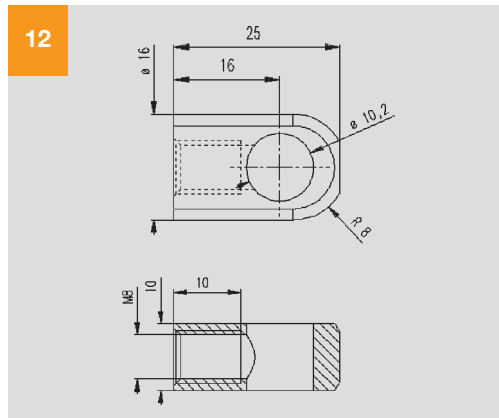
10.
RF 3
Taladro Ø 6 M6
— Hole Ø 6 M6



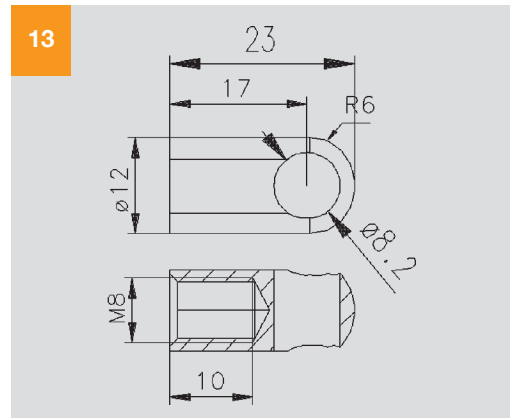
11.
RF 6
Taladro Ø 8 M8
— Hole Ø 8 M8



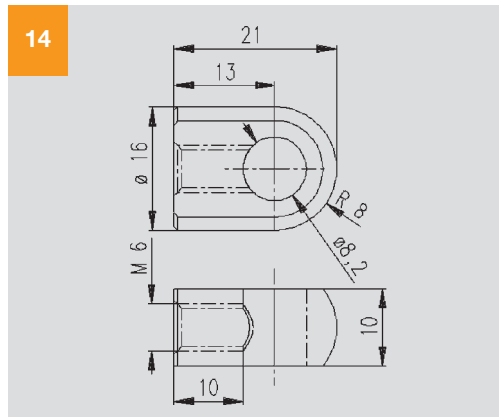
12.
RF 6A
Taladro Ø 10 M8
— Hole Ø 10 M8



13.
RF 7
Taladro Ø 8 M8
— Hole Ø 8 M8



14.
RF 9
Taladro Ø 8 M6
— Hole Ø 8 M6



1.

TZ Zamak

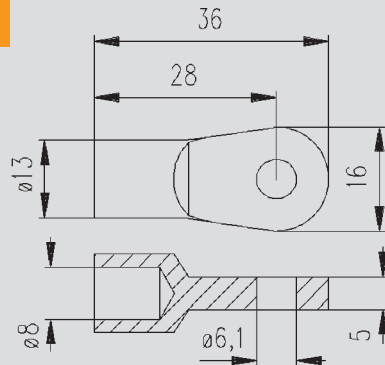
Taladro Ø 6

Material: Zamak

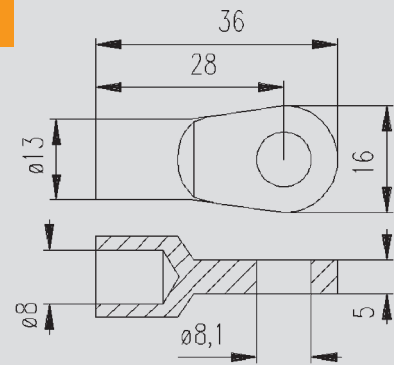
—Hole Ø 6

Material: Zamak

1



2



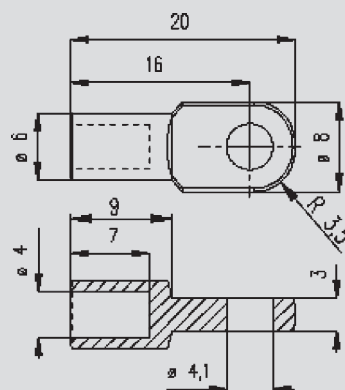
3.

TZ 12

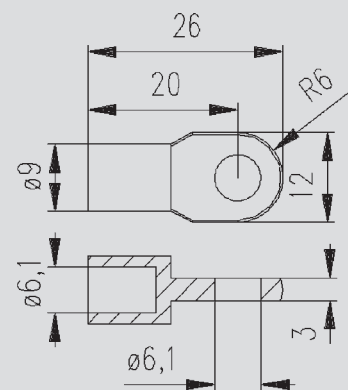
Taladro Ø 4

—Hole Ø 4

3



4



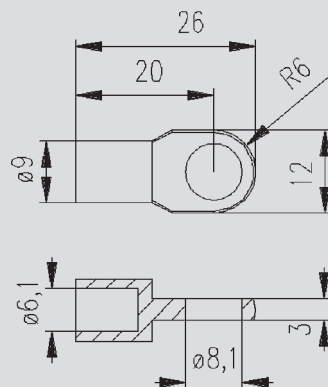
5.

TZ 3

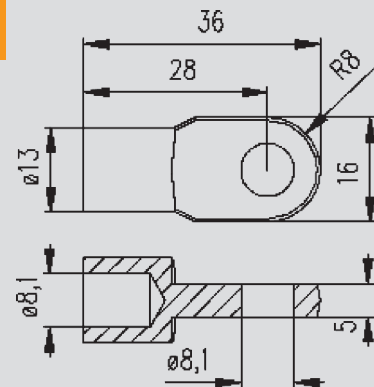
Taladro Ø 8

—Hole Ø 8

5



6



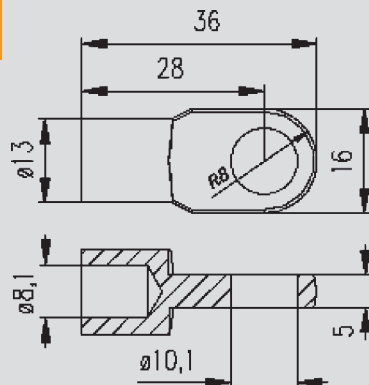
7.

TZ 5

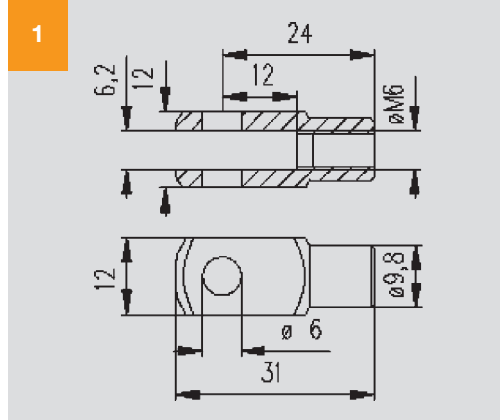
Taladro Ø 10

—Hole Ø 10

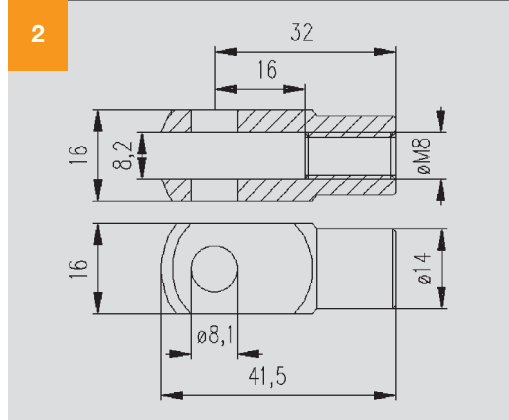
7



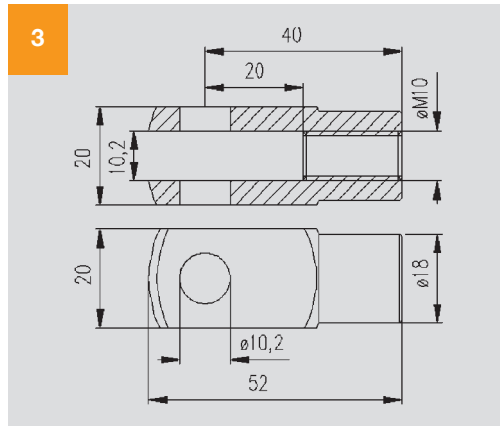
1.
FC 1
 Taladro Ø 6 M6
 –Hole Ø 6 M6



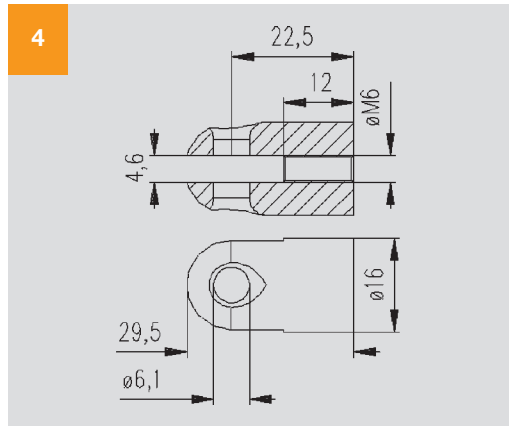
2.
FC 2
 Taladro Ø 8 M8
 –Hole Ø 8 M8



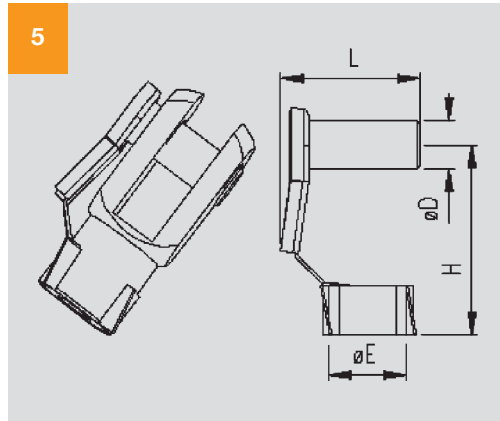
3.
FC 3
 Taladro Ø 10 M10
 –Hole Ø 10 M10



4.
FC 4
 Taladro Ø 6 M6
 –Hole Ø 6 M6



5.
CLIP
 Para FC2 / FC3
 –For FC2 / FC3



FC

Fijaciones
 –End fittings

COD	D	L	H
FC2	8	22	35
FC3	10	25	40

1.

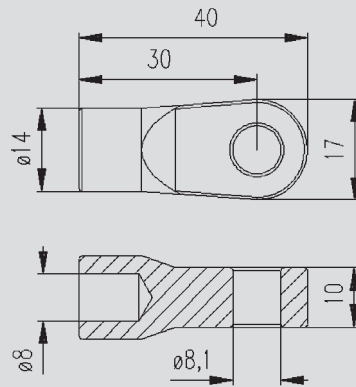
TF 1 ZamakTaladro \varnothing 8

Materia: Zamak

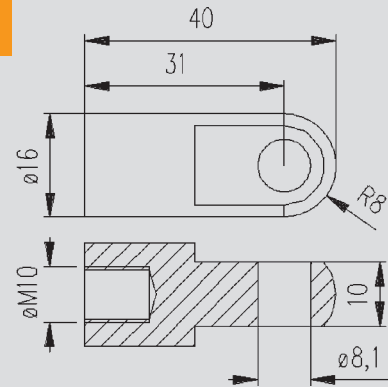
—Hole \varnothing 8

Material: Zamak

1



2



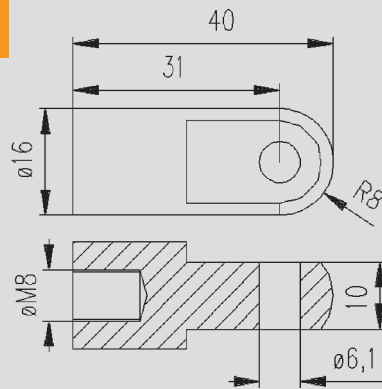
3.

TF 2Taladro \varnothing 6 M8—Hole \varnothing 6 M8

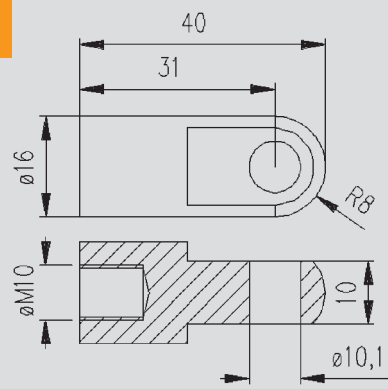
4.

TF 3Taladro \varnothing 10 M10—Hole \varnothing 10 M10

3



4



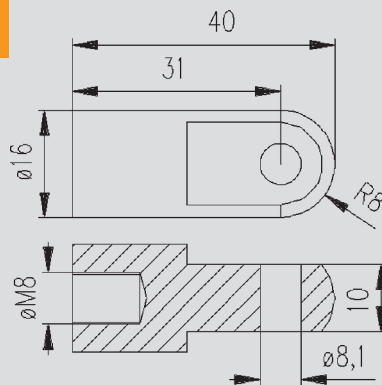
5.

TF 4Taladro \varnothing 8 M8—Hole \varnothing 8 M8

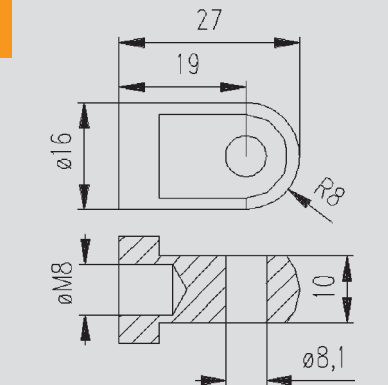
6.

TF 5Taladro \varnothing 8 M8—Hole \varnothing 8 M8

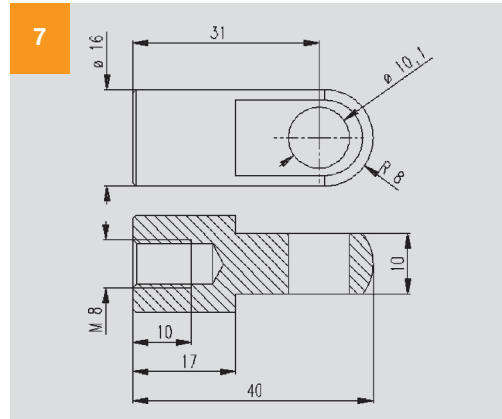
5



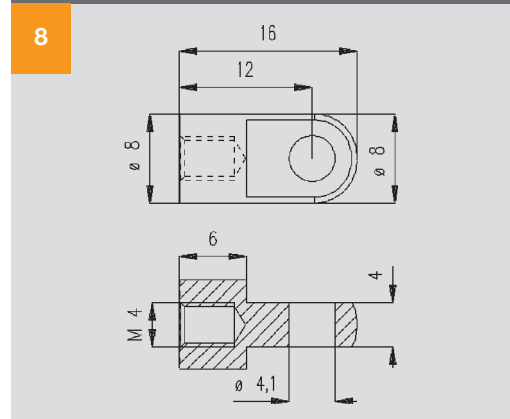
6



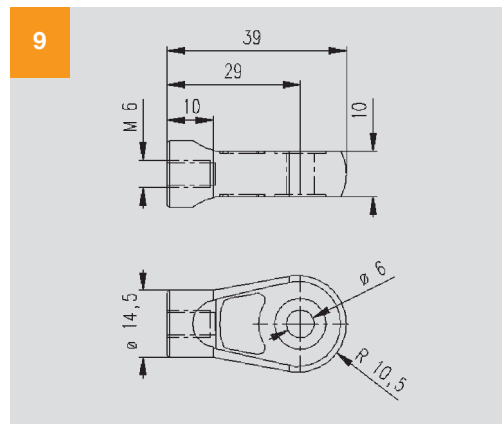
7.
TF 6
Taladro Ø 10 M8
—Hole Ø 10 M8



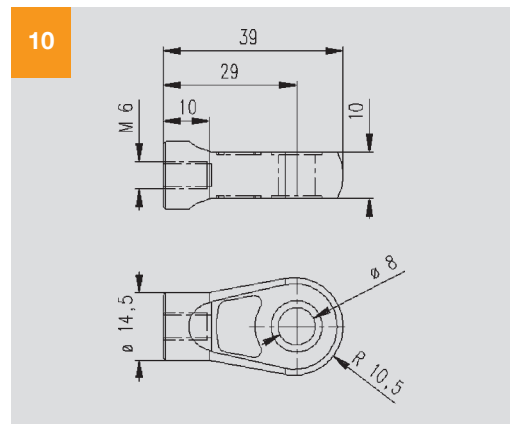
8.
TF 12
Taladro Ø 4 M4
—Hole Ø 4 M4



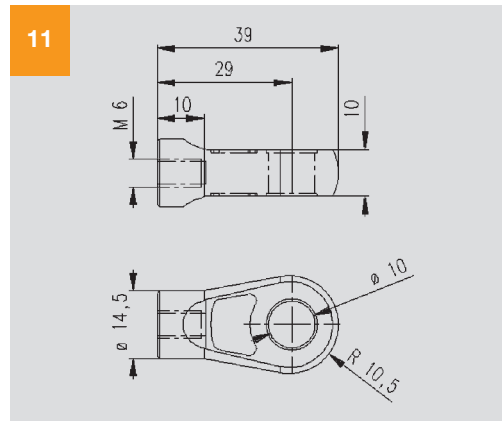
9.
TF PL 1A
Taladro Ø 6 M6
Material: PA
—Hole Ø 6 M6
Material: PA



10.
TF PL 1B
Taladro Ø 8 M6
Material: PA
—Hole Ø 8 M6
Material: PA



11.
TF PL 1C
Taladro Ø 10 M6
Material: PA
—Hole Ø 10 M6
Material: PA



TF

Fijaciones
—End fittings

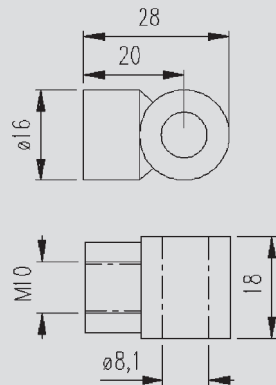
1.

BS 1 NSTaladro Ø 8 M10
—Hole Ø 8 M10

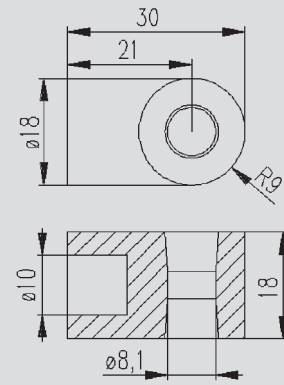
2.

BS 1Taladro Ø 8
Material: Zamak
—Hole Ø 8
Material: Zamak

1



2



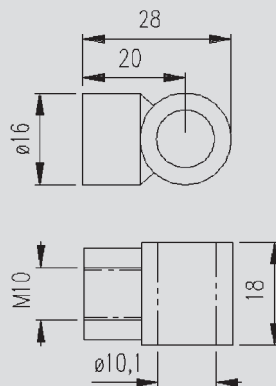
3.

BS 2 NSTaladro Ø 10 M10
—Hole Ø 10 M10

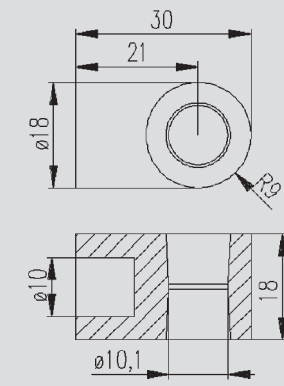
4.

BS 2Taladro Ø 10
Material: Zamak
—Hole Ø 10
Material: Zamak

3



4



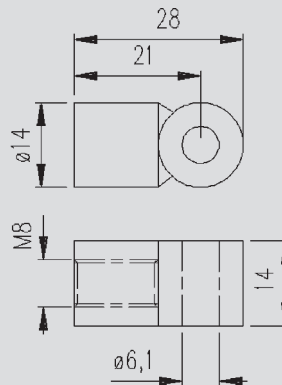
5.

BS 3 NSTaladro Ø 6 M8
—Hole Ø 6 M8

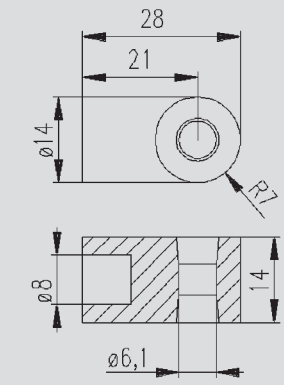
6.

BS 3Taladro Ø 6
Material: Zamak
—Hole Ø 6
Material: Zamak

5

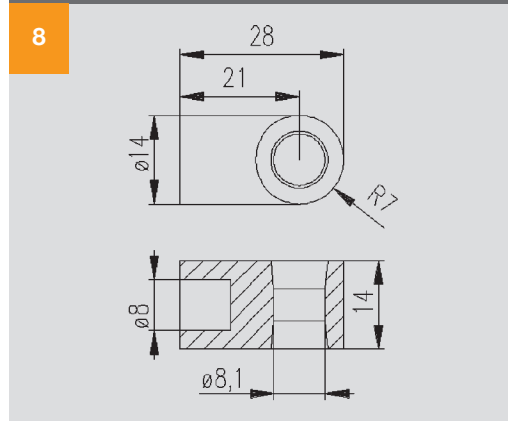
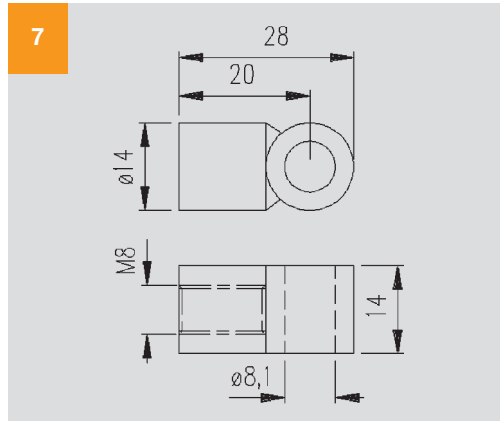


6



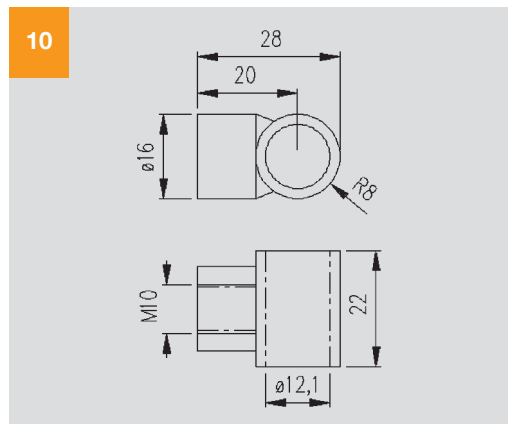
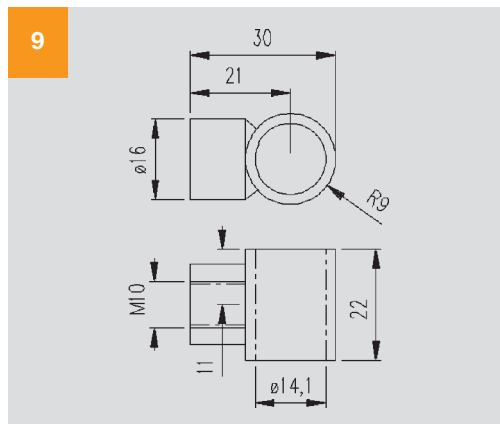
7.
BS 4 NS
Taladro Ø 8 M8
—Hole Ø 8 M8

8.
BS 4
Taladro Ø 8
Material: Zamak
—Hole Ø 8
Material: Zamak



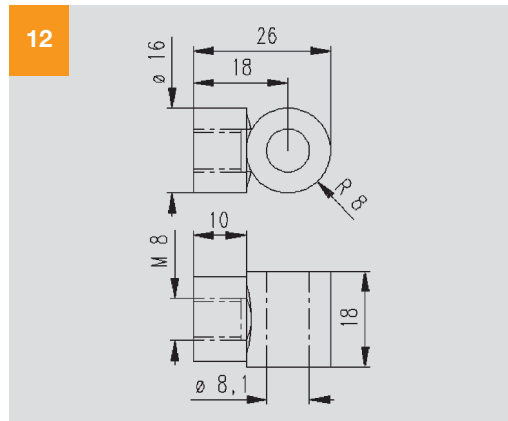
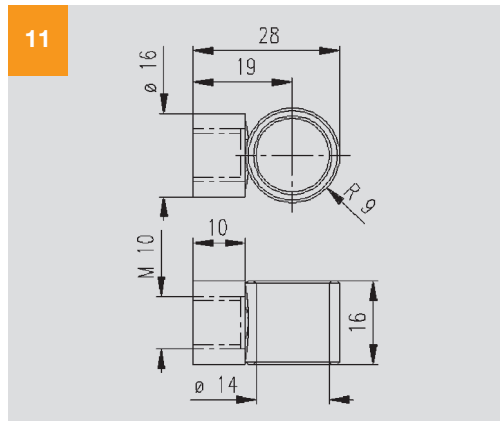
9.
BS 6
Taladro Ø 14 M10
—Hole Ø 14 M10

10.
BS 7
Taladro Ø 12 M10
—Hole Ø 12 M10

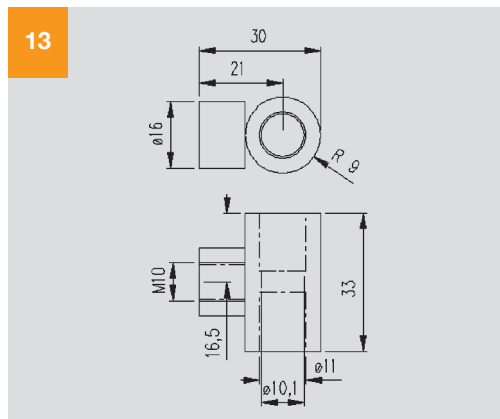


11.
BS 8
Taladro Ø 14 M10
—Hole Ø 14 M10

12.
BS 8 NS
Taladro Ø 8 M8
—Hole Ø 8 M8



13.
BS STE
Taladro Ø 10 M10
—Hole Ø 10 M10



BS

Fijaciones
—End fittings

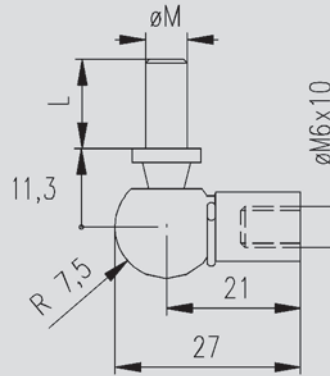
TS

Fijaciones
—End fittings**TS 1ACC****DIN 1802 M6**

Perno SN M 6 / M 8

—Ball studs

SN M 6 / M 8



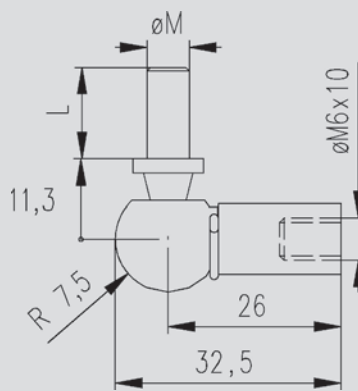
Refer. /Code	M	L	Llave/Wrench
Sn3/9	6	9	8
Sn3	6	13	8
Sn3esa	6	13	10
Sn3/16	6	16	8
Sn1b	8	15	10
Sn1bEsa	8	13	13

TS 1 DIN 1802 M6

Perno SN M 6 / M 8

—Ball studs

SN M 6 / M 8

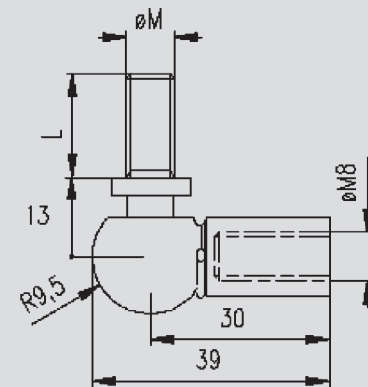


Refer. /Code	M	L	Llave/Wrench
Sn3/9	6	9	8
Sn3	6	13	8
Sn3esa	6	13	10
Sn3/16	6	16	8
Sn1b	8	15	10
Sn1bEsa	8	13	13

TS 2 DIN 1802 M8

Perno SN M 8

—Ball studs SN M 8

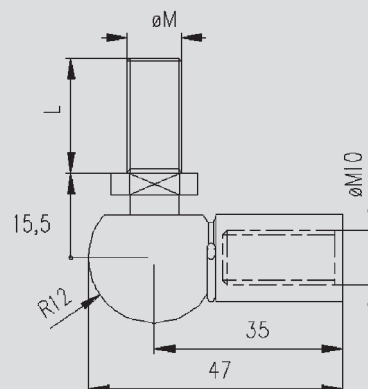


Refer. /Code	M	L	Llave/Wrench
Ts2sn	8	17	10

TS 3 DIN 1802 M10

Perno SN M 10

—Ball studs SN M 10

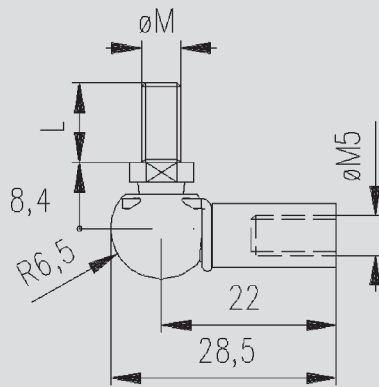


Refer. /Code	M	L	Llave/Wrench
Ts2sn	10	20	13

TS

Fijaciones
– End fittings

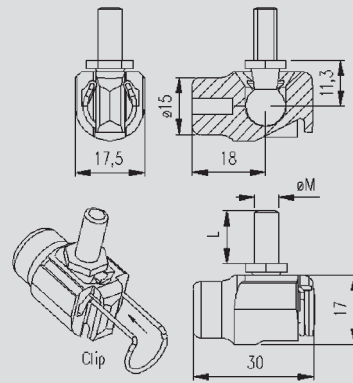
TS 4 DIN 1802 M5
Perno SN M 5 / M 6
– Ball studs
SN M 5 / M 6



Refer. /Code	M	L	Llave/Wrench
--------------	---	---	--------------

Sn4acc	5	7	8
Sn4	5	10	7
Sn1al	6	12	10

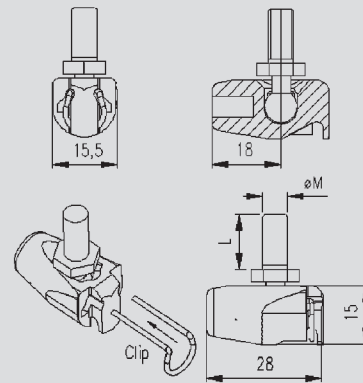
TS NS
Perno SN M 6 / M 8
Material: PA
– Ball studs
SN M 6 / M 8
Material: PA



Refer. /Code	M	L	Llave/Wrench
--------------	---	---	--------------

Sn3/9	6	9	8
Sn3	6	13	8
Sn3esa	6	13	10
Sn3/16	6	16	8
Sn1b	8	15	10
Sn1bEsa	8	13	13

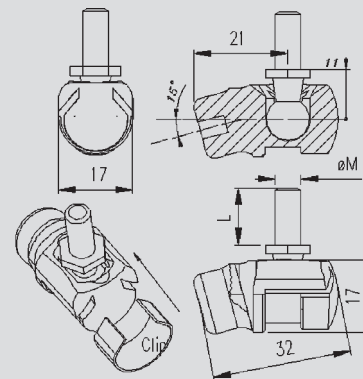
TS 4 NS
Perno SN M 5 / M 6
Material: PA
– Ball studs
SN M 5 / M 6
Material: PA



Refer. /Code	M	L	Llave/Wrench
--------------	---	---	--------------

Sn4acc	5	7	8
Sn4	5	10	7
Sn1al	6	12	10

TS PNS
Perno SN M 6 / M 8
Material: PA
– Ball studs
SN M 6 / M 8
Material: PA



Refer. /Code	M	L	Llave/Wrench
--------------	---	---	--------------

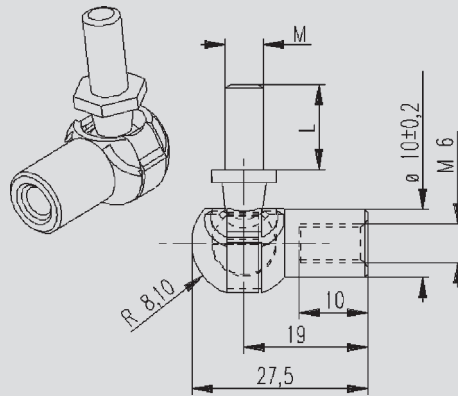
Sn3/9	6	9	8
Sn3	6	13	8
Sn3esa	6	13	10
Sn3/16	6	16	8
Sn1b	8	15	10
Sn1bEsa	8	13	13

TS

Fijaciones —End fittings

TS 5 M6

Perno SN M 6 / M 8
—Ball studs
SN M 6 / M 8



Refer. /Code	M	L	Llave/Wrench
--------------	---	---	--------------

Sn3/9	6	9	8
-------	---	---	---

Sn3	6	13	8
-----	---	----	---

Sn3esa	6	13	10
--------	---	----	----

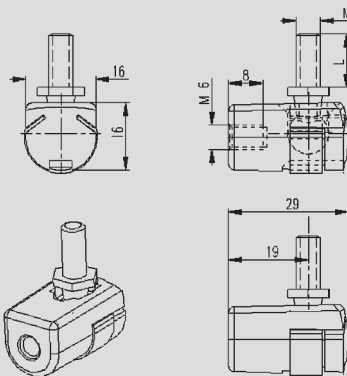
Sn3/16	6	16	8
--------	---	----	---

Sn1b	8	15	10
------	---	----	----

Sn1bEsa	8	13	13
---------	---	----	----

TS 1 PL

Perno SN M 6 / M 8
Material: PA
—Ball studs
SN M 6 / M 8
Material: PA



Refer. /Code	M	L	Llave/Wrench
--------------	---	---	--------------

Sn3/9	6	9	8
-------	---	---	---

Sn3	6	13	8
-----	---	----	---

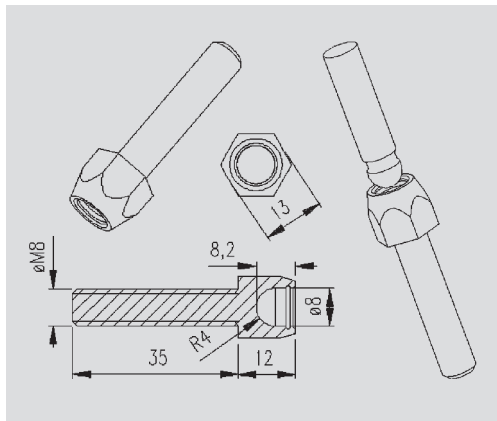
Sn3esa	6	13	10
--------	---	----	----

Sn3/16	6	16	8
--------	---	----	---

Sn1b	8	15	10
------	---	----	----

Sn1bEsa	8	13	13
---------	---	----	----

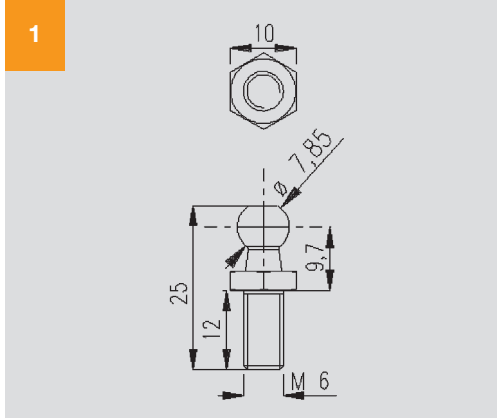
PE SN M8



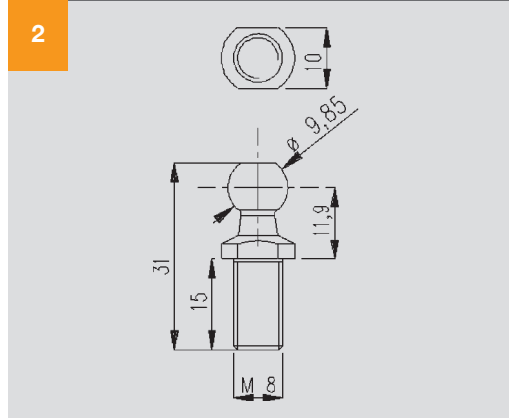
SN

Fijaciones
– End fittings

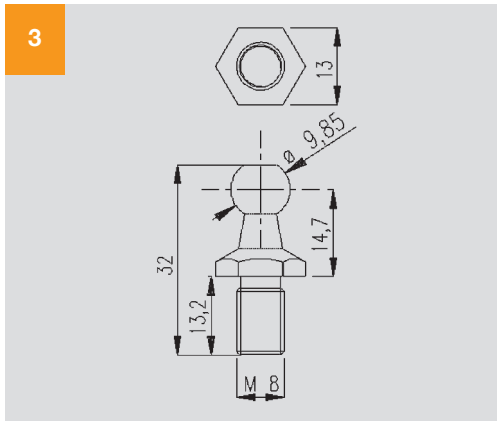
1.
SN 1 AL



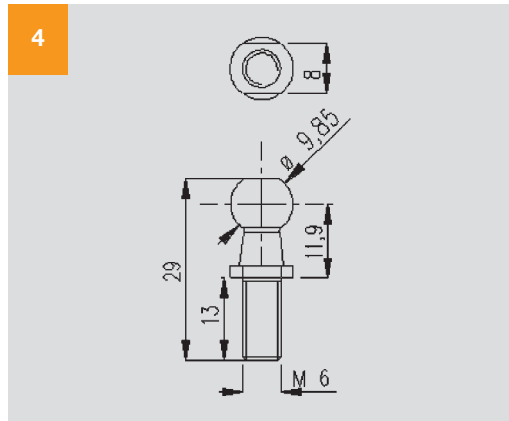
2.
SN 1 B



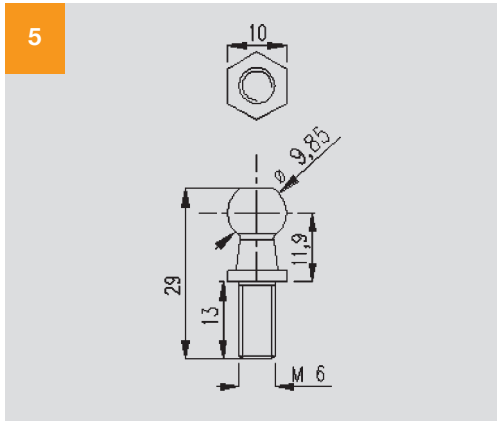
3.
SN 1 B ESA



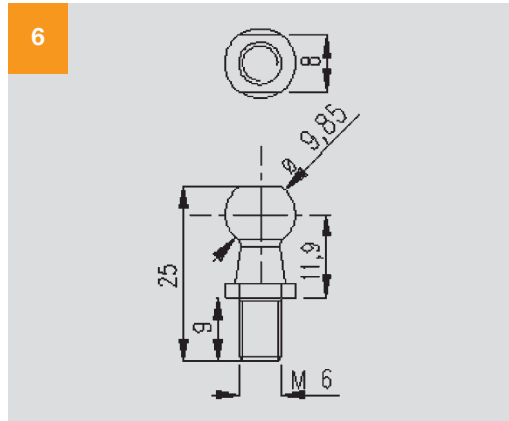
4.
SN 3



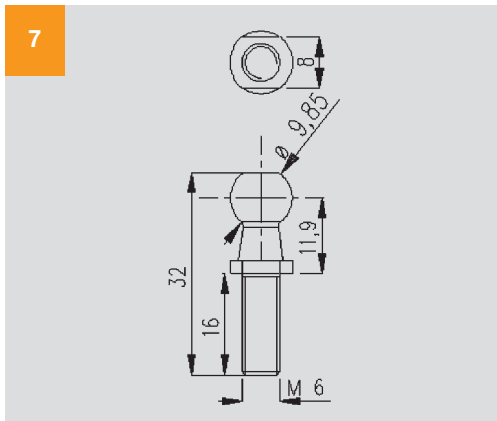
5.
SN 3 ESA



6.
SN 3/9

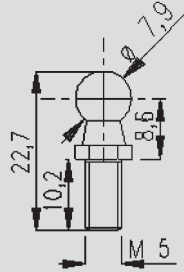


7.
SN 3/16

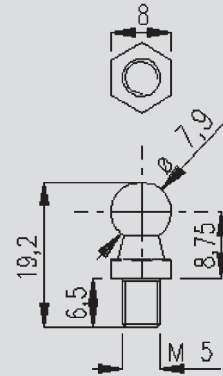


SNFijaciones
—End fittings8.
SN 4

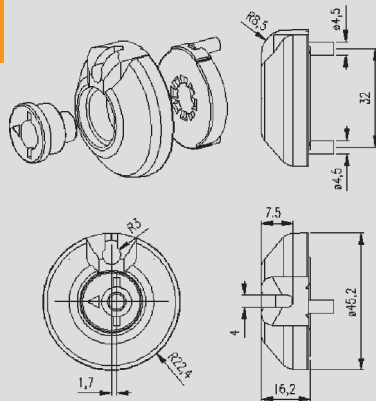
8

9.
SN 4 ACC

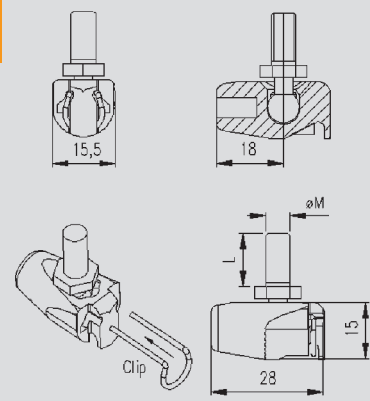
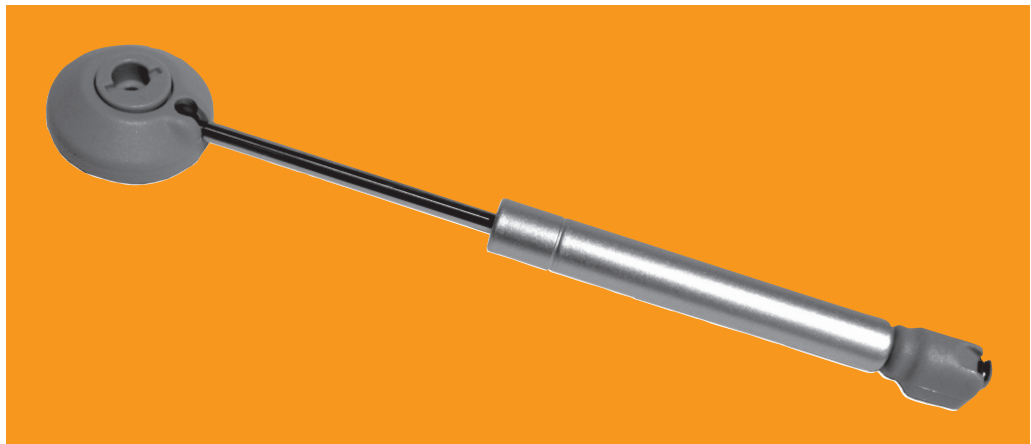
9

**FIX-IT**Fijaciones
—End fittings1.
TX / TF PATENT
Material: PA—
Material: PA

1

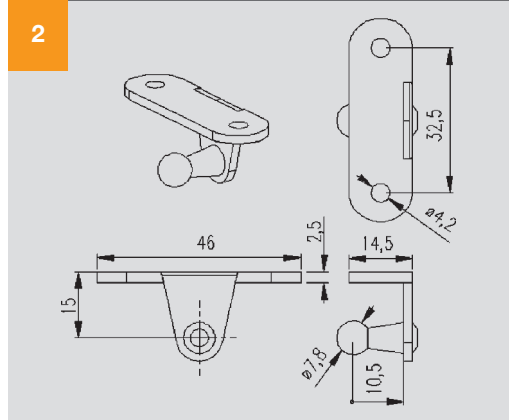
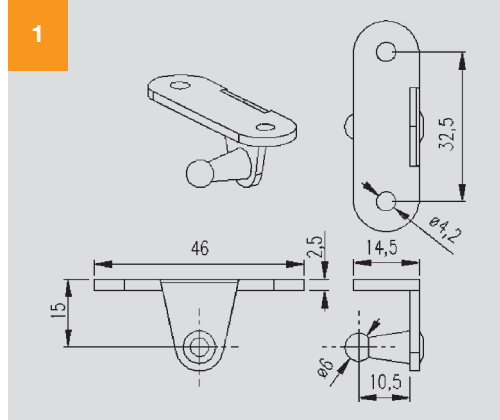


2

2.
TS 4 NS
Material: PA
—Material: PAEjemplo
ensamblaje FIX-IT
—FIX-IT assembled

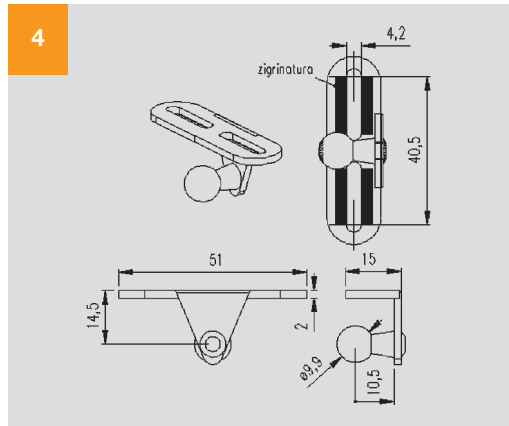
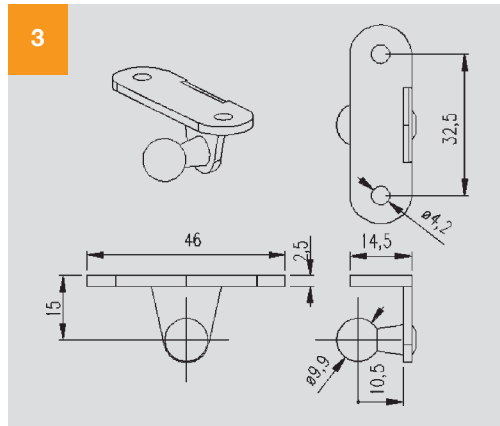
1.
SF 1502 SN 6

2.
SF 1502 SN 8



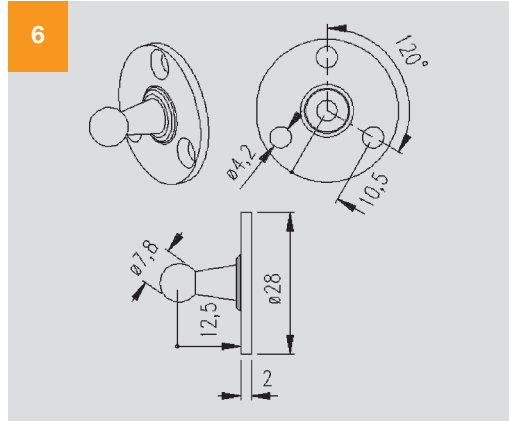
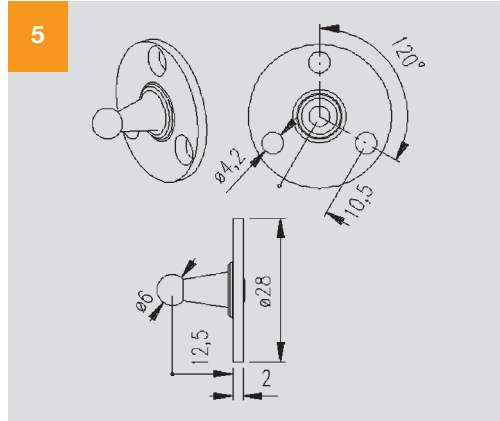
3.
SF 1502 SN 10

4.
SF 1502/F SN 10



5.
SF 1503 SN 6

6.
SF 1503 SN 8



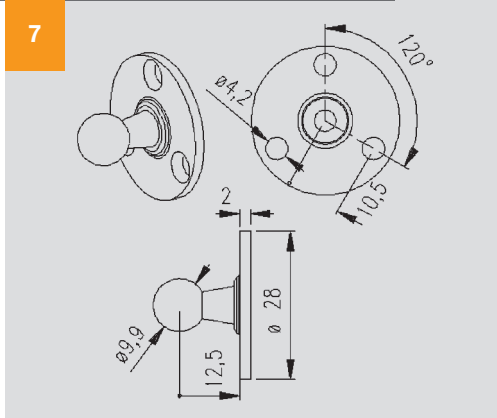
SF

Accesorios
—Accessories

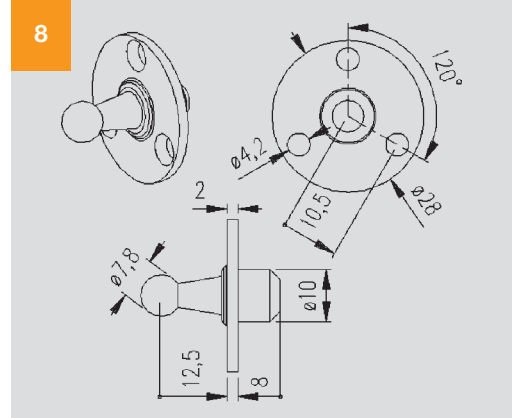
SF

Accesorios
—Accessories

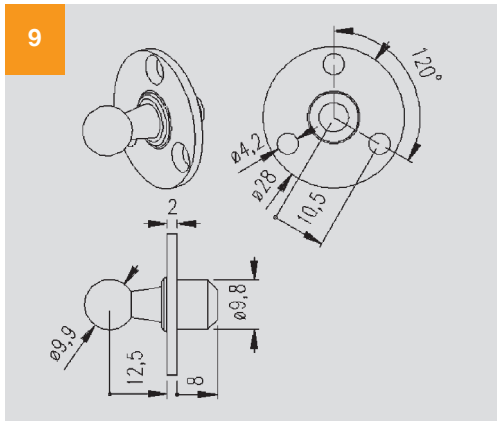
7.
SF 1503 SN 10



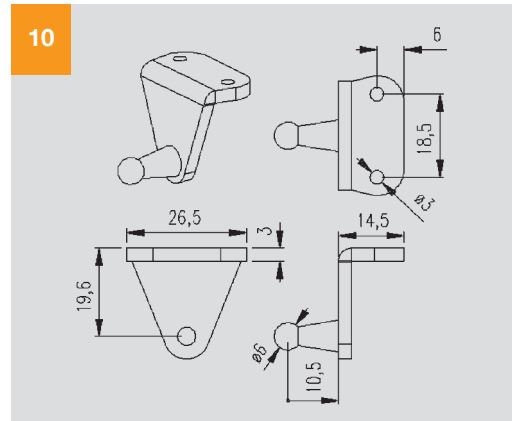
8.
SF 1503B SN 8



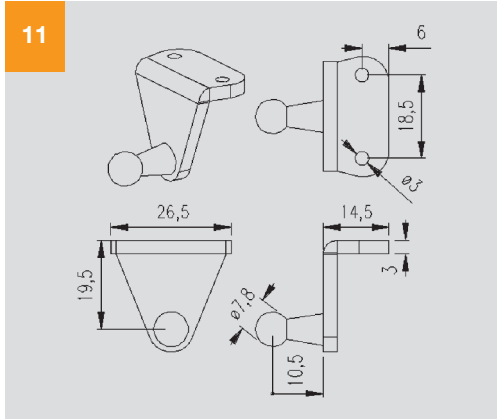
9.
SF 1503B SN 10



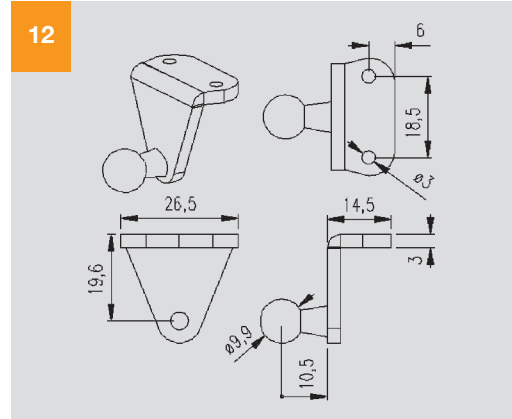
10.
SF 1506 SN 6



11.
SF 1506 SN 8

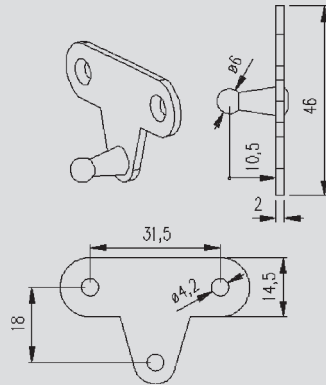


12.
SF 1506 SN 10



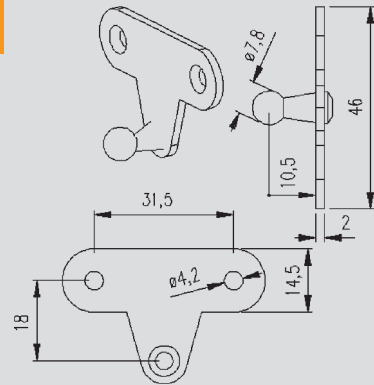
13.
SF 1507 SN 6

13



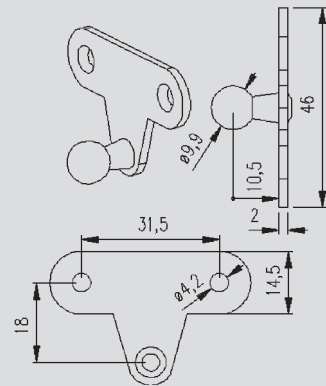
14.
SF 1507 SN 8

14



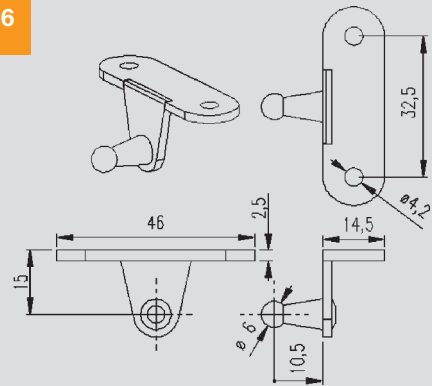
15.
SF 1507 SN 10

15



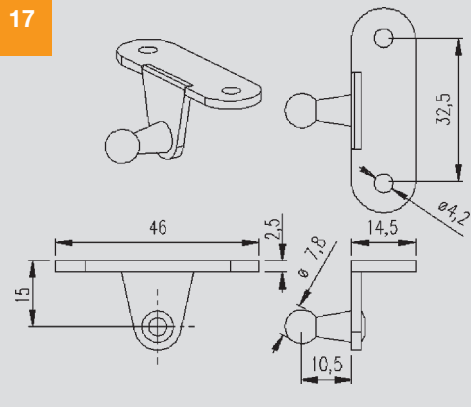
16.
SF 1508 SN 6

16



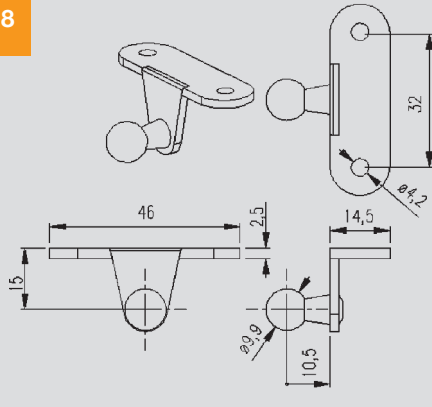
17.
SF 1508 SN 8

17



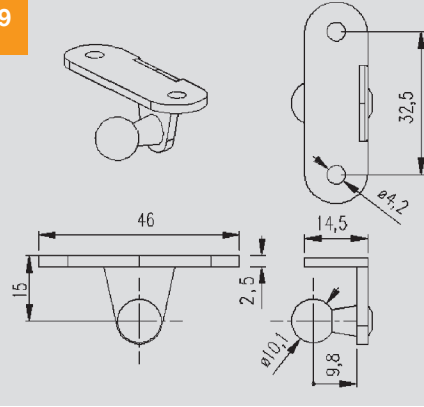
18.
SF 1508 SN 10

18



19.
SF 1509 SN 10
Espesor 2,5 mm
—2,5 mm thick

19



SF

Accesorios
—Accessories

Soportes

Accesorios
— Accessories
(brackets)

1.

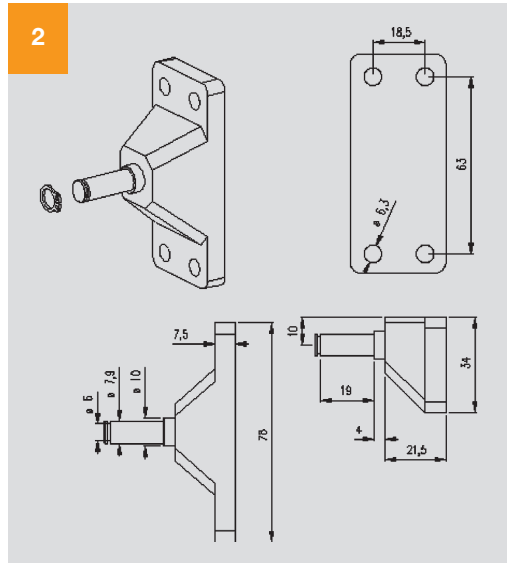
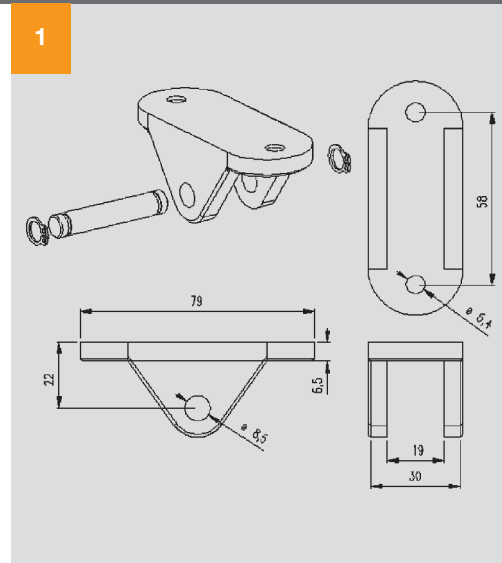
A 200

Material: Aluminio
— Material: Aluminium

2.

A 201

Material: Aluminio
— Material: Aluminium

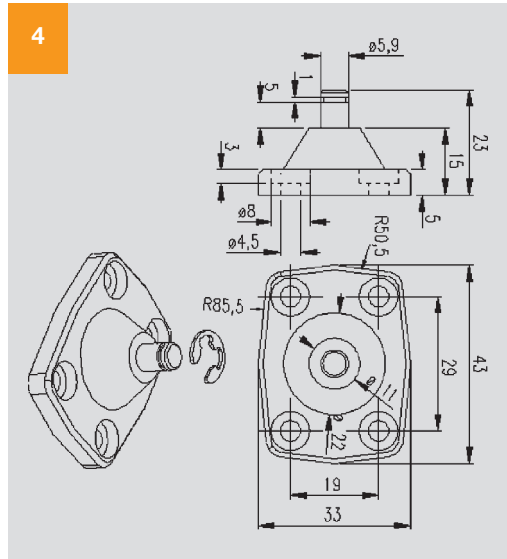
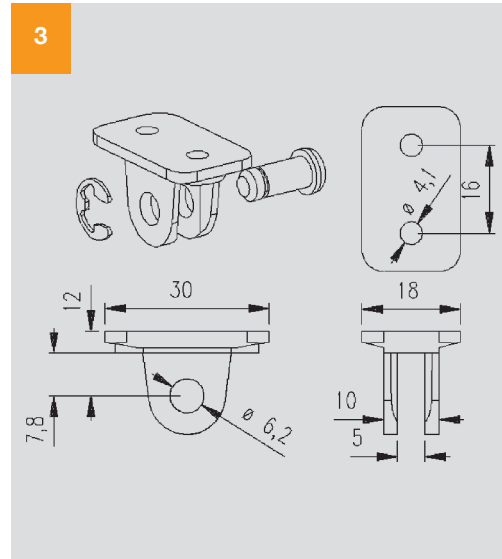


3.

P 89

Para resorte a gas de
fuerza máx. 15 kg.

Material: PA
— For gas springs
up to 15 Kg.
Material: PA



5.

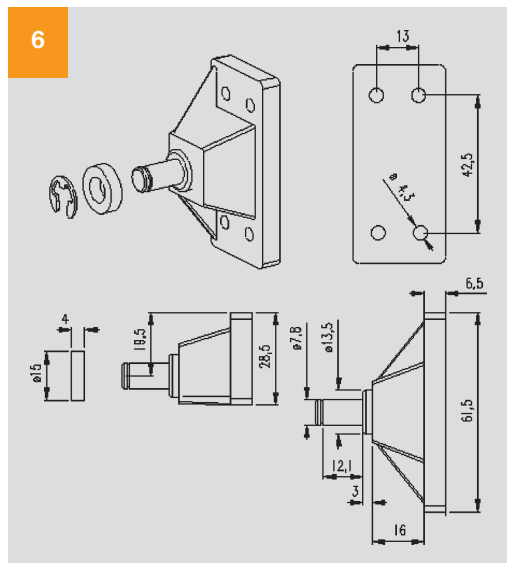
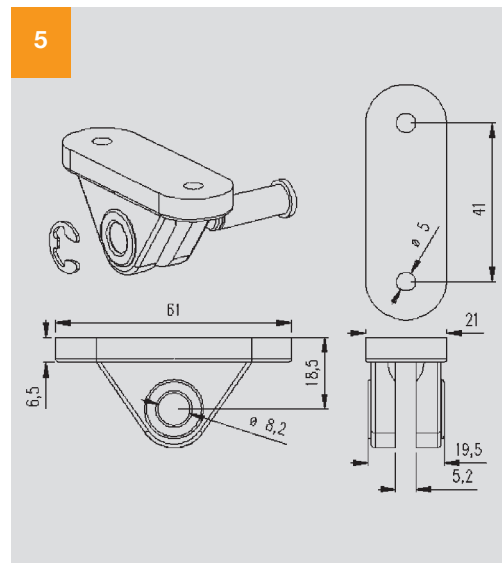
P 100

Material: PA
— Material: PA

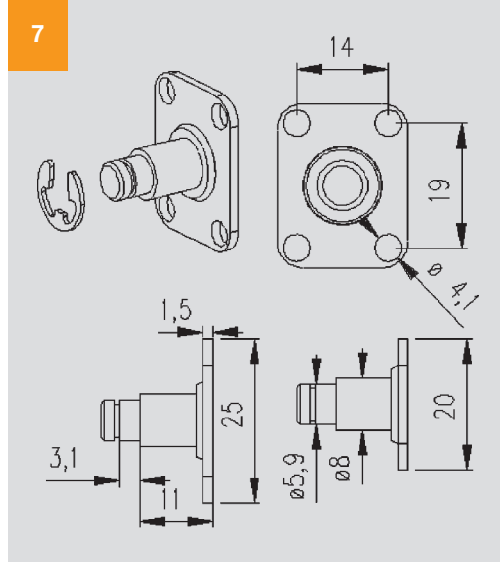
6.

P 101

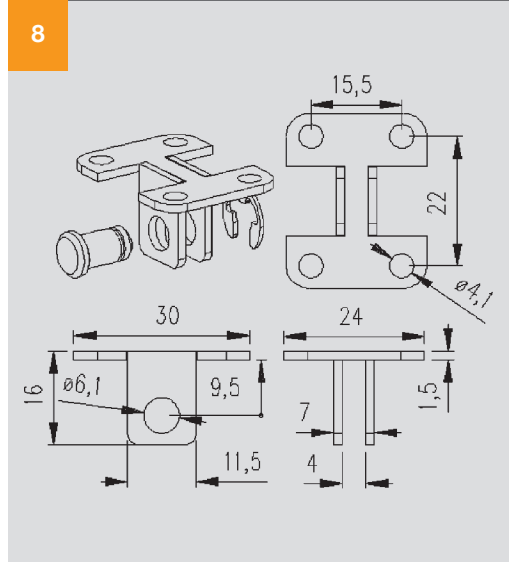
Material: PA
— Material: PA



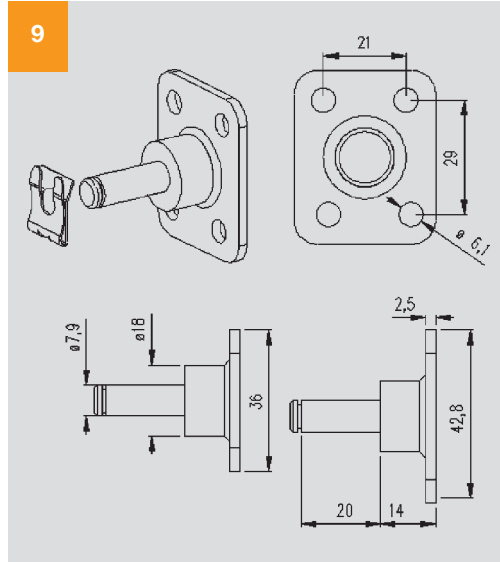
7.
SF 1500



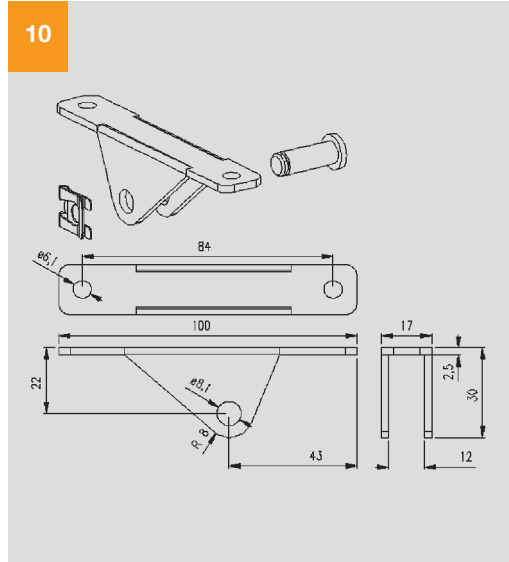
8.
SF 1501



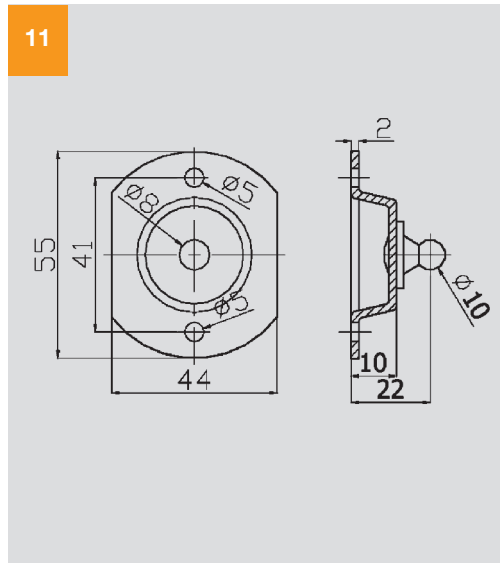
9.
SF 1504



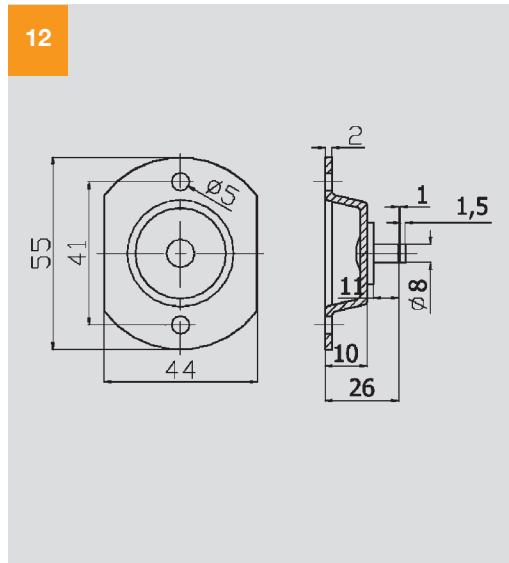
10.
SF 1505



11.
SF BRK 012



12.
SF BRK 015



Soportes

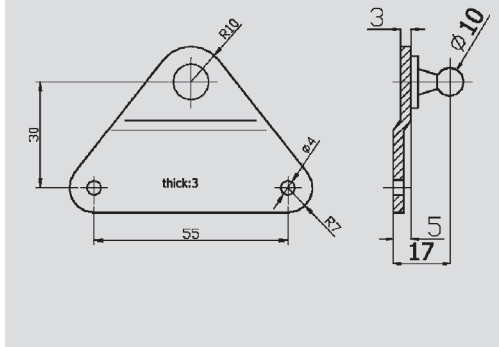
Accesorios
— Accessories
(brackets)

Soportes

Accesorios
— Accessories
(brackets)

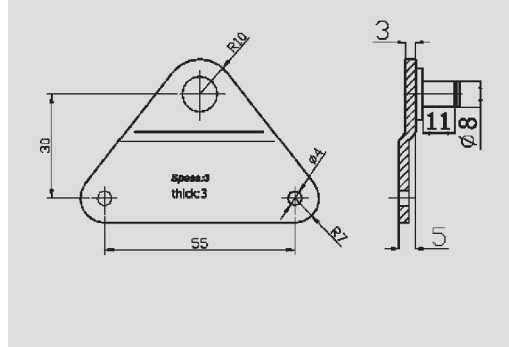
SF BRK 023

13



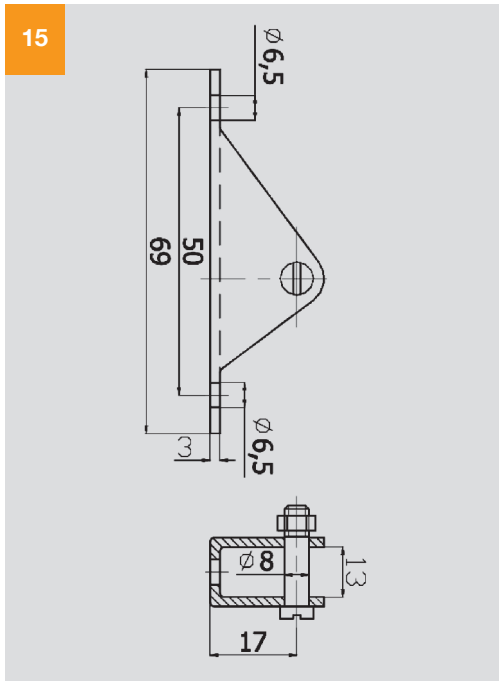
SF BRK 026

14



SF BRK 032

15





Moreira, 44
36691 Soutomaíor
Pontevedra
España (Spain)
www.tecdema.es

T + 34 986 705 041
F + 34 986 705 041

info@tecdema.es

Resortes a gas

Gas springs

